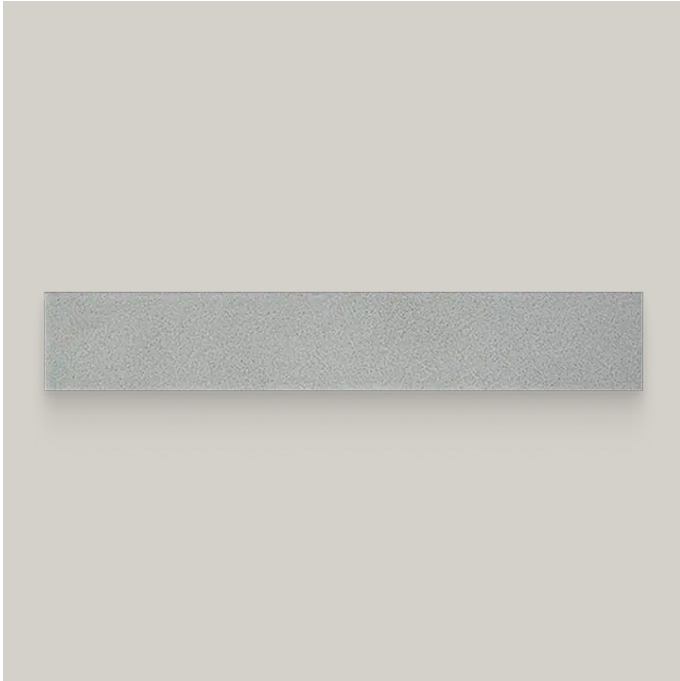


Shinrin 1.57 x 9 White Matte Rectangle Tile



Shinrin 1.57x9 White Matte Rectangle Tile

SKU

SPUI-903006

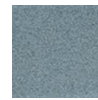
COLOR OPTIONS



Sea

**White**

Blue

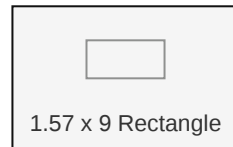


Mist



Charcoal

SHAPE / SIZE



1.57 x 9 Rectangle

PRODUCT INFORMATION

| | |
|----------------------------|-------------------------------|
| Material Porcelain | Shape Rectangle |
| Chip/Tile Size 1.57 x 9 | Finish Matte |
| Color White | Sq Ft Per Piece N/A |
| Glazed Yes | Tile Thickness 9 mm |
| Shade Variation V2 | Texture Variation T1 |
| Size Variation S2 | Pits & Chips Variation PC1 |

PACKAGING INFORMATION

Pieces Per Box
144

Sq Ft Per Box
14.4

Weight Per Box
55

Boxes Per Crate
48

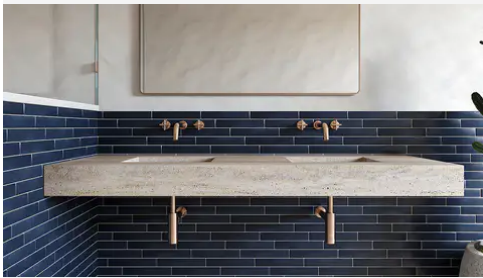
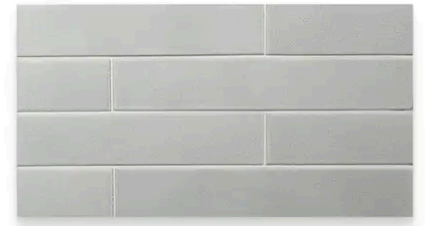
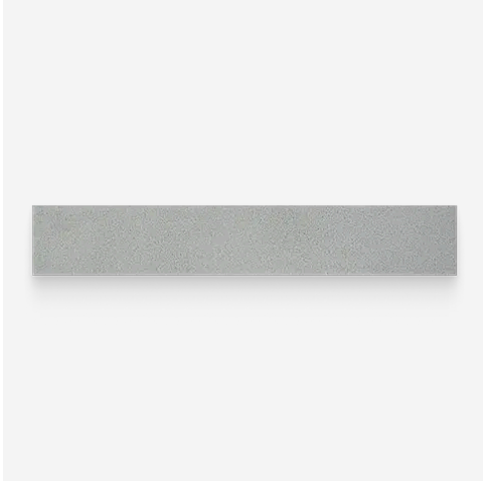
Sq Ft Per Crate
691.2

Sold By Full Box
Yes

SPACES

| Residential Projects | | Commercial Projects | |
|----------------------|-----|---------------------|-----|
| Wall Interior | Yes | Wall Interior | Yes |
| Wall Exterior | Yes | Wall Exterior | Yes |
| Floor Interior | Yes | Floor Interior | Yes |
| Floor Exterior | No | Floor Exterior | No |
| Pool | Yes | Pool | Yes |

PRODUCT GALLERY



Shinrin reimagines the subway tile through a precise 1.57x9 format that brings a sleek contemporary vibe to classic patterns. The collection moves beyond standard neutrals by using matte glazes that blend organic undertones to create colors that feel lived-in rather than flat. With a palette ranging from the depth of Charcoal to the aquatic blend of Sea this handmade porcelain body offers the resilience required for floors and pools while delivering the authentic character unique to handmade design.