

2.5 x 9 Latte Matte Rectangle Tile

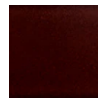


2.5x9 Latte Matte Rectangle Tile

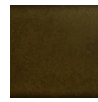
SKU

SPUI-903409

COLOR OPTIONS



Tea Leaves



Olive



Latte



Caramel



Ocean

SHAPE / SIZE



0.63 x 7.5 Jolly



2.5 x 9 Rectangle

PRODUCT INFORMATION

Material Porcelain	Shape Rectangle
Chip/Tile Size 2.5 x 9	Finish Matte
Color Latte	Sq Ft Per Piece N/A
Glazed Yes	Tile Thickness 9 mm
Shade Variation V2	Texture Variation T1
Size Variation S2	Pits & Chips Variation PC1

PACKAGING INFORMATION

Pieces Per Box
80

Sq Ft Per Box
13.34

Weight Per Box
50

Boxes Per Crate
48

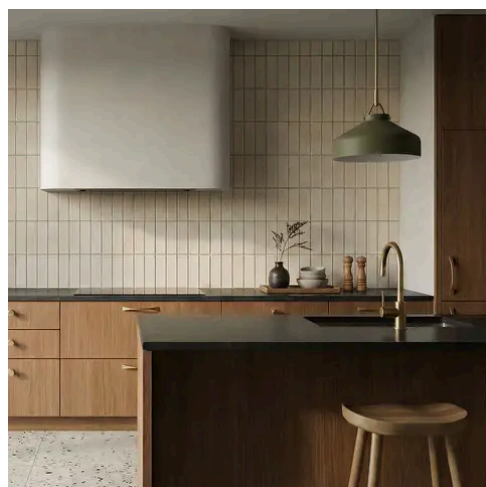
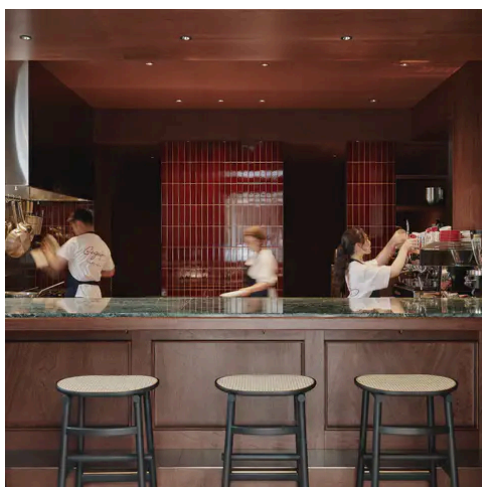
Sq Ft Per Crate
640.32

Sold By Full Box
Yes

SPACES

Residential Projects		Commercial Projects	
Wall Interior	Yes	Wall Interior	Yes
Wall Exterior	Yes	Wall Exterior	Yes
Floor Interior	Yes	Floor Interior	Yes
Floor Exterior	No	Floor Exterior	No
Pool	No	Pool	No

PRODUCT GALLERY



Eigo proves that true character comes from process, not patterns. Curated for its material integrity, this series features a 2.5x9 field tile and matching 0.63x7.5 trim that embrace the subtle irregularities of traditional ceramic firing. The collection explores the duality of glaze through two finishes: a high-shine glossy that captures the light, and a smooth matte that absorbs it. The palette moves beyond simple swatches into living color, spanning from the botanical grounds of Olive and Tea Leaves to the moody, atmospheric weight of Storm and Night. Eigo delivers the modular elegance and vibrant depth required to create spaces of distinction.